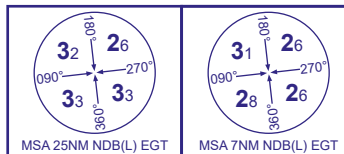
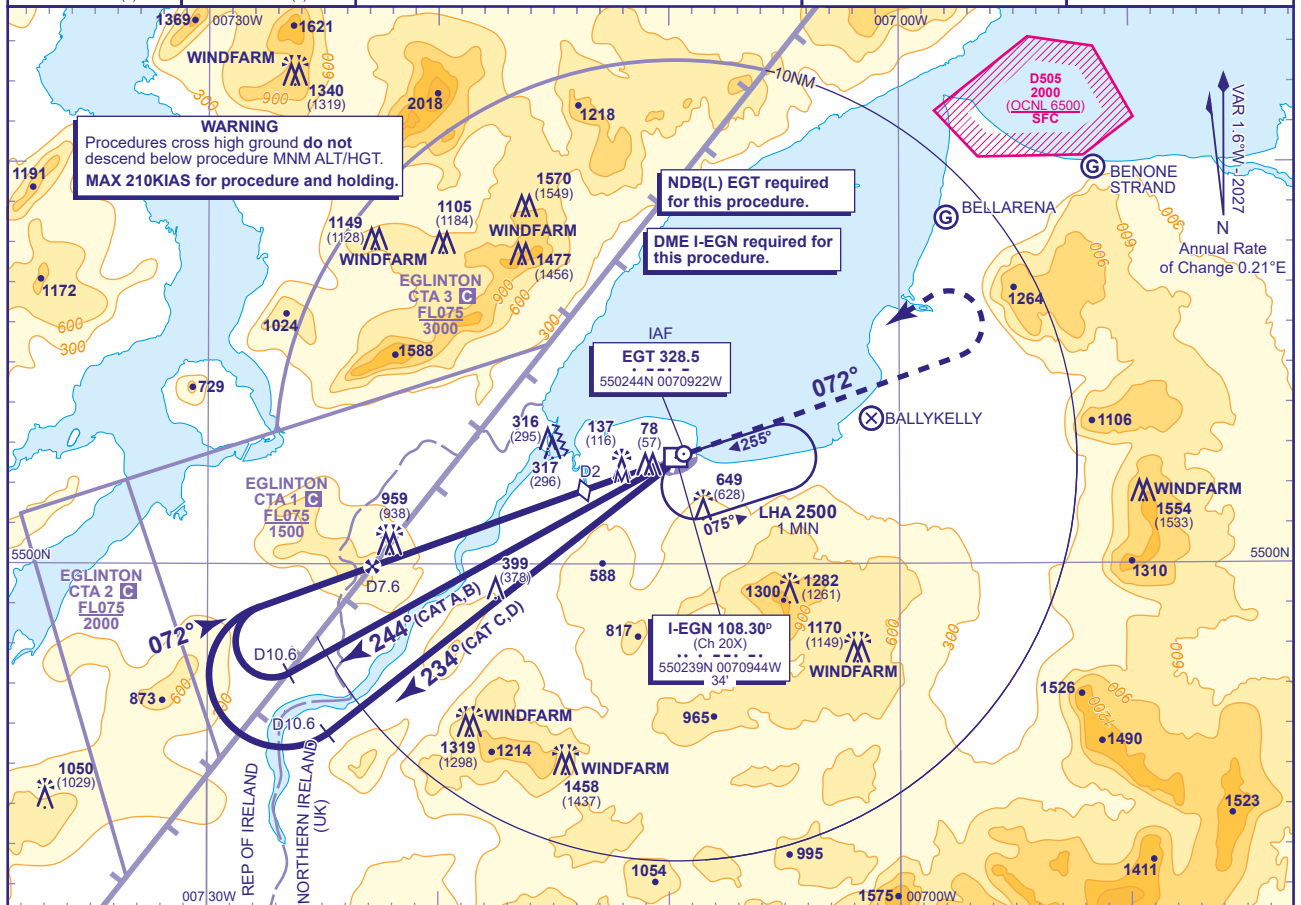


(ACFT CAT A,B,C,D)

TRANSITION ALTITUDE  
3000

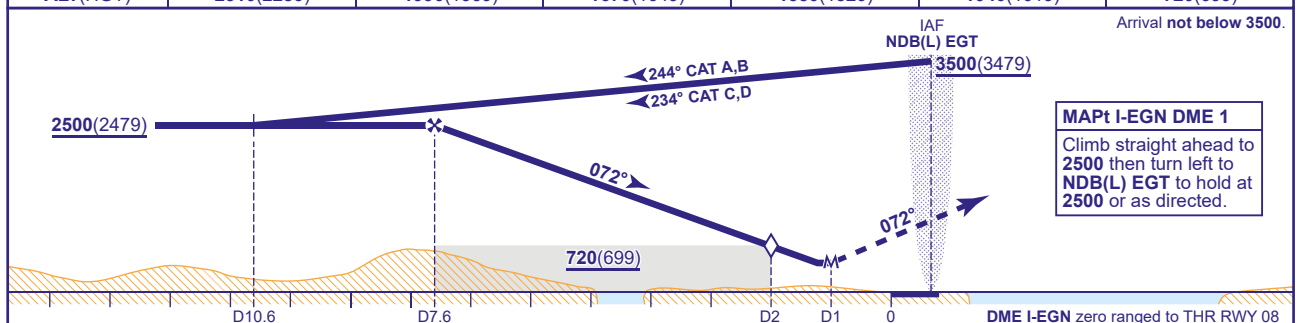


APP	123.630	EGLINTON APPROACH	AD ELEVATION	23
TWR	134.155	EGLINTON TOWER	THR ELEVATION	21
ATIS	119.380	EGLINTON INFORMATION	OBSTACLE ELEVATION 1570 AMSL (1549) (ABOVE THR)	
			BEARINGS ARE MAGNETIC	



**RECOMMENDED PROFILE** Gradient 5.24%, 318FT/NM

DME I-EGN	7	6	5	4	3	2 (SDF)
ALT(HGT)	2310(2289)	1990(1969)	1670(1649)	1350(1329)	1040(1019)	720(699)



Aircraft Category		A	B	C	D	Rate of descent	G/S KT	160	140	120	100	80
OCA (OCH)	Procedure	530(509)	530(509)	530(509)	530(509)		FT/MIN	850	740	640	530	420
VM(C)OCA (OCH AAL)	Total Area	950(927)	950(927)	1740(1717)	1740(1717)							
	North of RWY 08/26	430(407)	580(557)	720(697)	1090(1067)							

<b>NOTES</b>	<p>1 Lowest altitude to commence procedure from hold is <b>2500</b>.</p> <p>2 FAT offset 2.7° from RWY 08 C/L.</p> <p>3 DME not usable below <b>3500</b> between 140° and 185° due to terrain effects.</p> <p>4 Aircr are permitted to enter the Eglinton CTA areas whilst using these procedures and under the control of Eglinton ATC.</p>
--------------	--

**CHANGE (2/26):** APP FREQUENCY. MAG VAR. MAG TRACKS.